

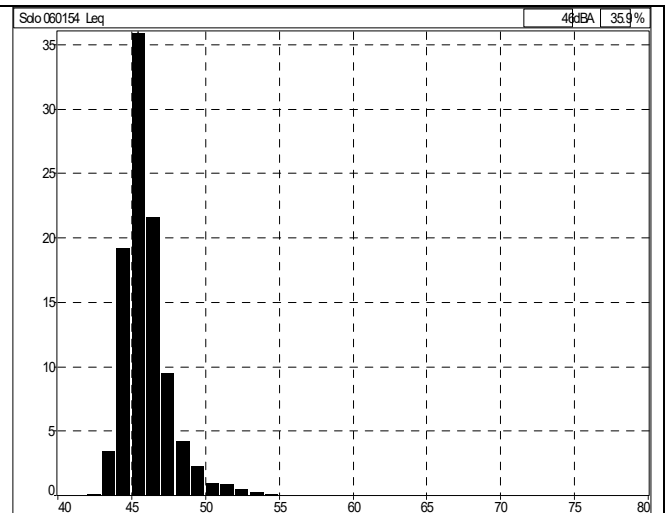
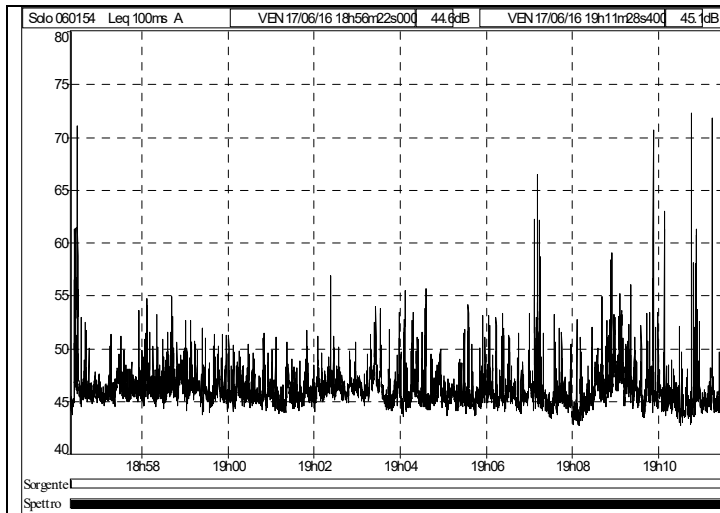


COMUNE DI MONASTIER DI TREVISO

Schede di rilevazione strumentale
Allegato alla classificazione acustica
comunale

File	1- 060154_160516_080112000.CMG									
Inizio	16/05/16 08.01.12.000									
Fine	16/05/16 08.31.02.500									
Canale	Tipo	Wgt	Unit	Leq	Lmin	Lmax	L95	L90	L10	L5
Solo 2- 06	Leq	A	dB	48,8	41,0	74,8	43,1	58,7	50,9	49,7

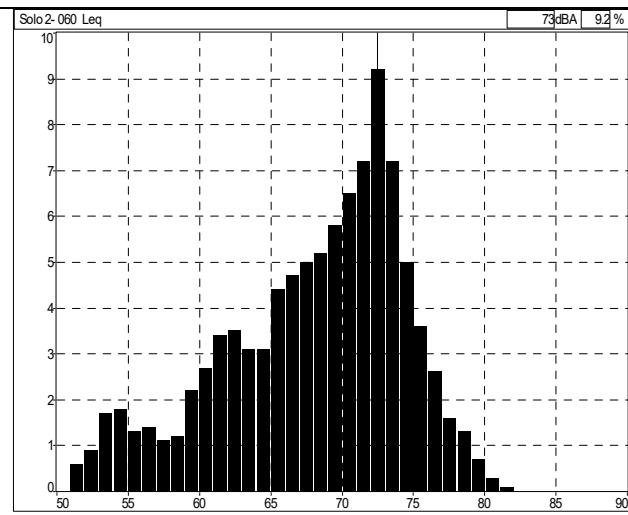
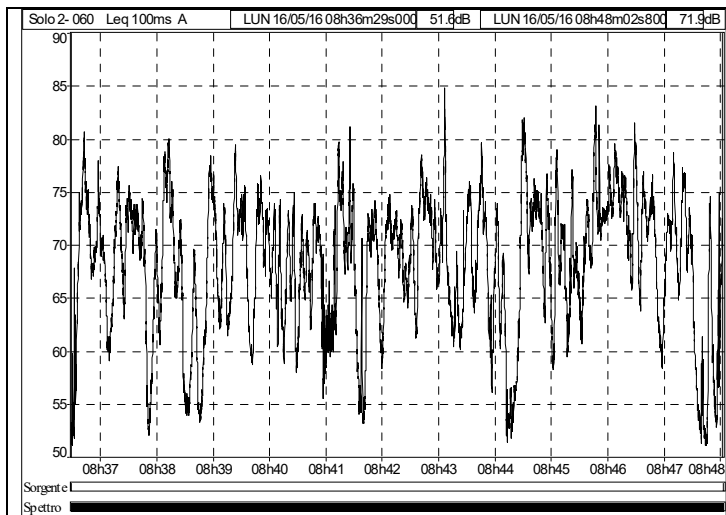
13 °C – sereno - assenza di vento
 Traffico veicolare leggero nei parcheggi
 Impiantistica dell'ospedale



File	060154_160617_185622000.CMG									
Inizio	17/06/16 18.56.22.000									
Fine	17/06/16 19.11.28.500									
Canale	Tipo	Wgt	Unit	Leq	Lmin	Lmax	L95	L90	L10	L5
Solo 060154	Leq	A	dB	47,5	42,7	72,3	44,1	44,5	47,9	49,2

27 °C – assenza di vento
 Impiantistica dell'ospedale

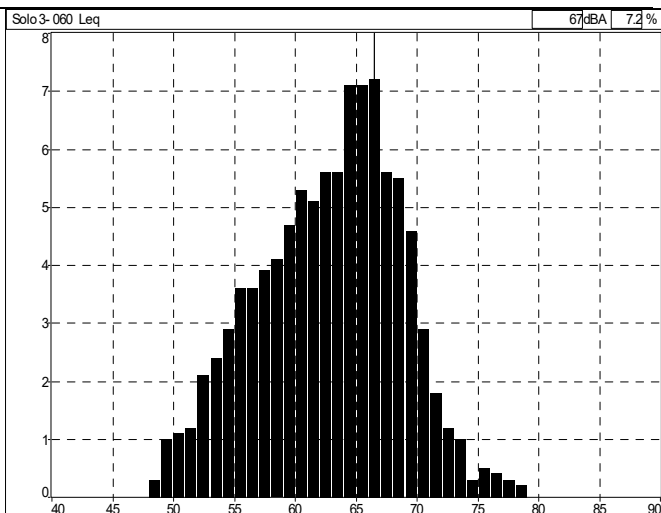
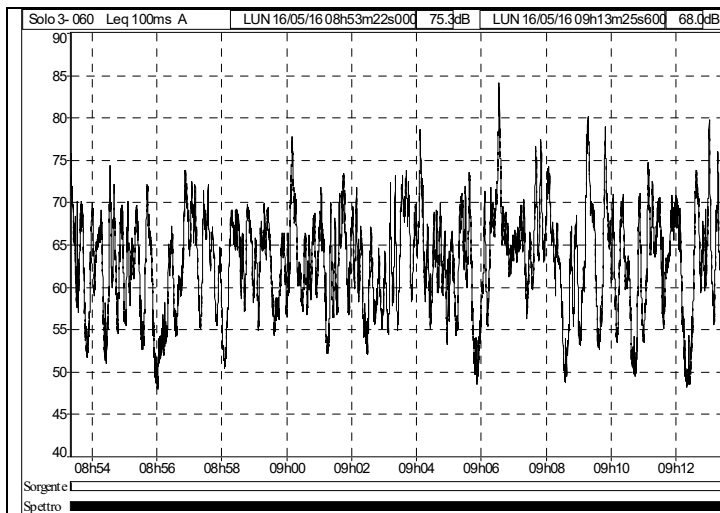




File	2- 060154_160516_083629000.CMG									
Inizio	16/05/16 08.36.29.000									
Fine	16/05/16 08.48.02.900									
Canale	Tipo	Wgt	Unit	Leq	Lmin	Lmax	L95	L90	L10	L5
Solo 2-060	Leq	A	dB	71,6	51,1	84,8	54,8	58,7	75,1	76,7

13 °C – sereno - assenza di vento
 Traffico veicolare leggero e pesante: 152 auto, 17 camion
 Tre aperture e chiusure cancello elettrico
 Taglio erba in lontananza.






File	3-060154_160516_085322000.CMG									
Inizio	16/05/16 08.53.22.000									
Fine	16/05/16 09.13.25.700									
Canale	Tipo	Wgt	Unit	Leq	Lmin	Lmax	L95	L90	L10	L5
Solo 3-060	Leq	A	dB	66,7	47,9	84,1	52,5	54,4	69,7	71,6

13 °C – sereno - assenza di vento
 Traffico veicolare leggero e pesante: 202 auto, 29 camion

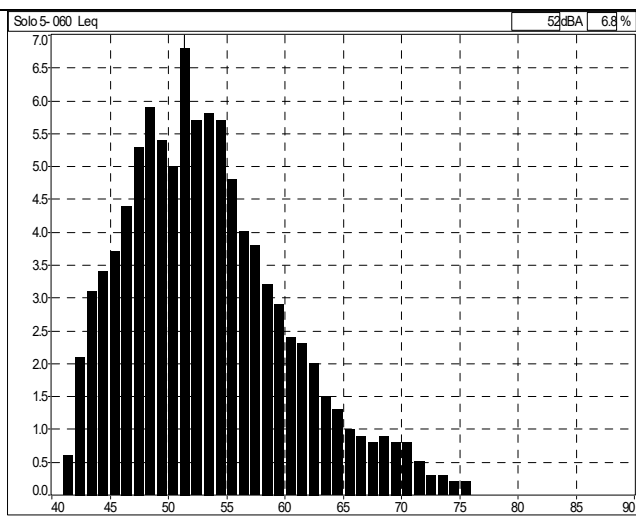
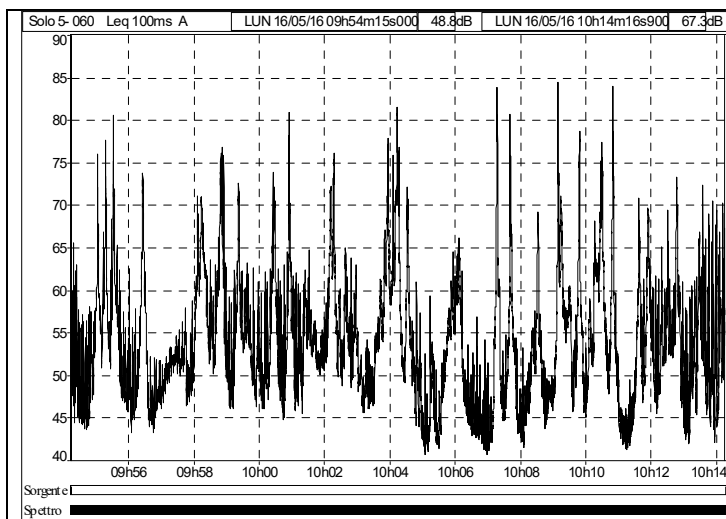
Fauna
 Debole antropico



File											
4- 060154_160516_085314000.CMG											
Inizio											
16/05/16 08.53.14.000											
Fine											
16/05/16 09.13.03.000											
Canale	Tipo	Wgt	Unit	Leq	Lmin	Lmax	L95	L90	L10	L5	
Solo 2-06	Leq	A	dB	66,6	47,9	84,1	56,5	58,7	51,6	49,7	
<p>14 °C – sereno - assenza di vento</p> <p>Passaggio di due cammioncini</p> <p>Lavorazioni e carrelli in aziende limitrofe</p>											

Posizione 5 Via Vallio – fronte civico n° 17

45.38.923 N 12.24.894 E

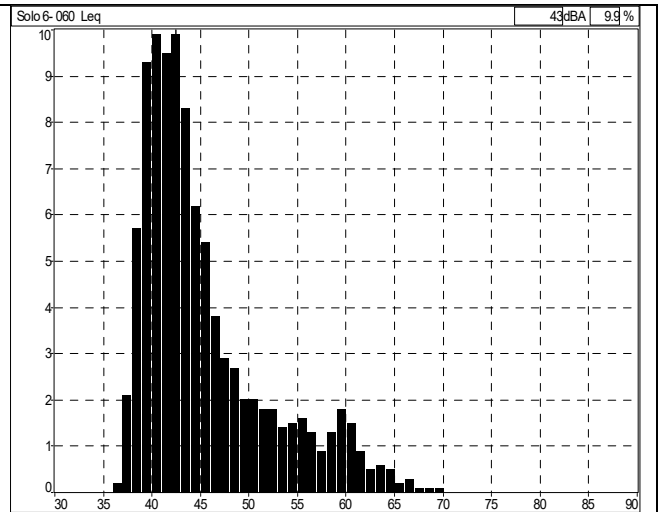
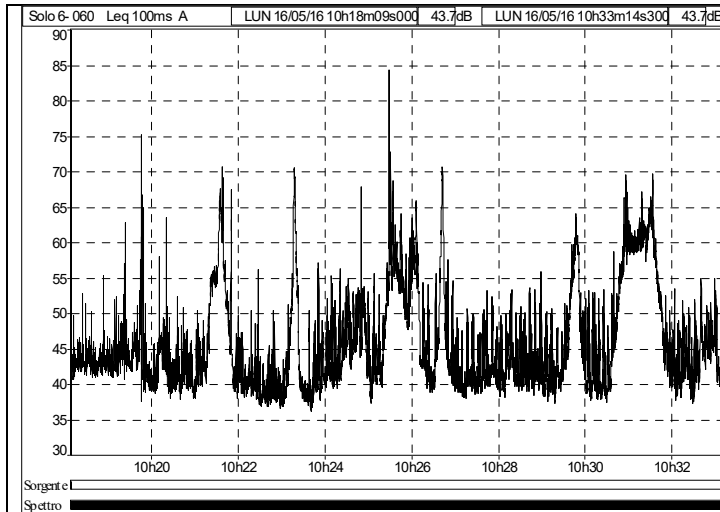


File	5- 060154_160516_095415000.CMG									
Inizio	16/05/16 09.54.15.000									
Fine	16/05/16 10.14.17.000									
Canale	Tipo	Wgt	Unit	Leq	Lmin	Lmax	L95	L90	L10	L5
Solo 5- 060	Leq	A	dB	61,6	40,6	84,4	43,7	45,1	63,3	67,6

13 °C – sereno - assenza di vento
 Traffico veicolare leggero e pesante: 37 auto, 2 camion

Fauna
 Carrelli elevatori di azienda a circa 200 m
 Chiusino

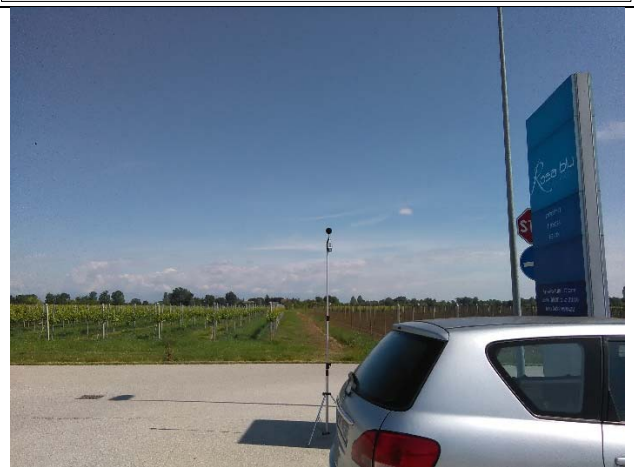




File	6- 060154_160516_101809000.CMG									
Inizio	16/05/16 10.18.09.000									
Fine	16/05/16 10.33.14.400									
Canale	Tipo	Wgt	Unit	Leq	Lmin	Lmax	L95	L90	L10	L5
Solo 6- 060	Leq	A	dB	54,1	36,1	84,3	38,5	39,2	56,7	60,3

15 °C – sereno - assenza di vento
 Traffico veicolare leggero e pesante: 37 auto, 2 camion

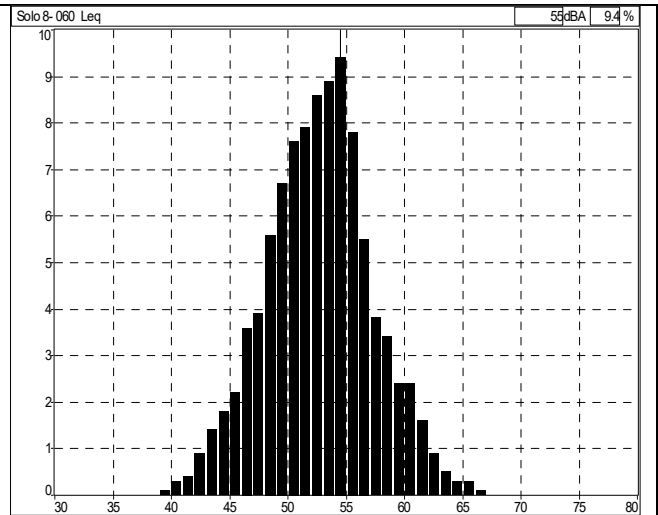
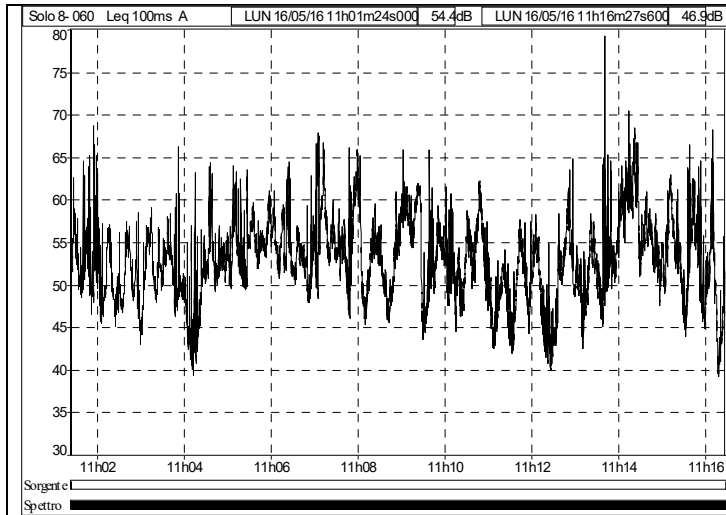
Fauna
 Aeromobile
 Lavori agricoli a circa 300 m



File	7- 060154_160516_085314000.CMG										
Inizio	16/05/16 08.53.14.000										
Fine	16/05/16 09.13.03.000										
Canale	Tipo	Wgt	Unit	Leq	Lmin	Lmax	L95	L90	L10	L5	
Solo 2- 06	Leq	A	dB	66,6	47,9	84,1	56,5	58,7	51,6	49,7	

Aeromobile
Lavori agricoli a circa 300 m



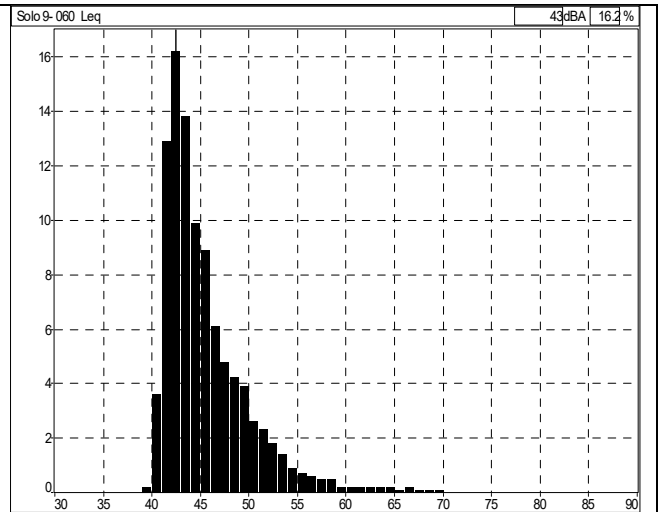
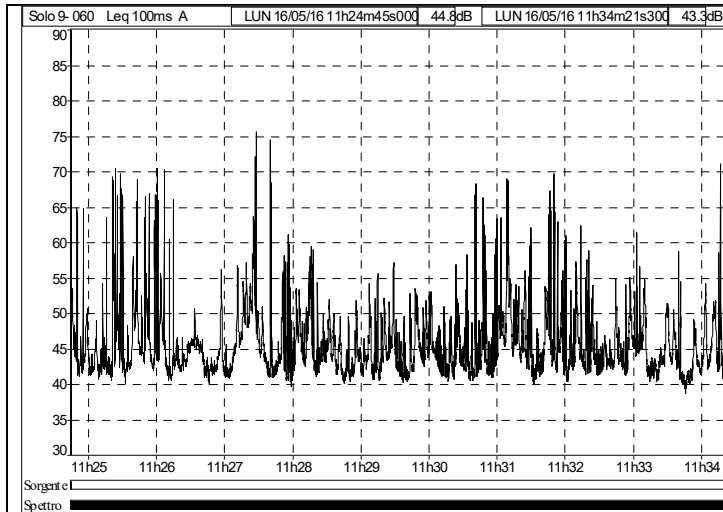


File	8- 060154_160516_110124000.CMG									
Inizio	16/05/16 11.01.24.000									
Fine	16/05/16 11.16.27.700									
Canale	Tipo	Wgt	Unit	Leq	Lmin	Lmax	L95	L90	L10	L5
Solo 8-060	Leq	A	dB	55,5	39,2	79,2	44,8	46,7	58,7	60,6

16 °C – sereno - assenza di vento
 Traffico veicolare leggero e pesante

Antropico
 Aeromobile
 Movimento auto nel parcheggio



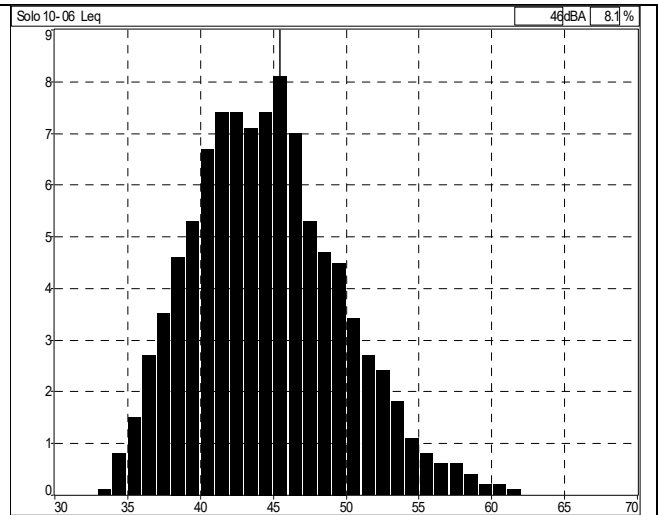
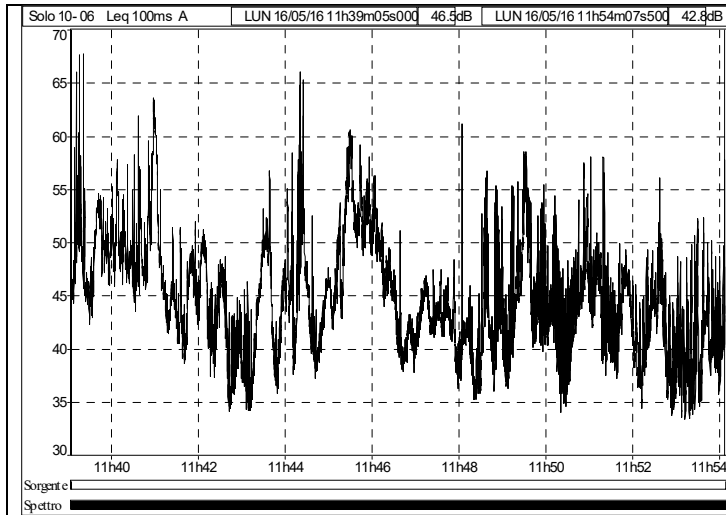


File	9- 060154_160516_112420000.CMG										
Inizio	16/05/16 11.24.20.000										
Fine	16/05/16 11.34.21.400										
Canale	Tipo	Wgt	Unit	Leq	Lmin	Lmax	L95	L90	L10	L5	
Solo 9-060	Leq	A	dB	57,4	38,7	82,5	41,1	41,6	51,9	55,6	

16 °C – sereno - assenza di vento
 Traffico veicolare leggero e pesante

Cani
 Zona industriale a est

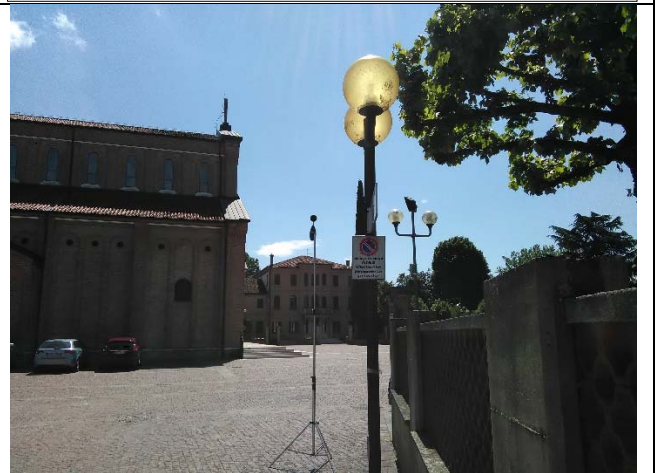


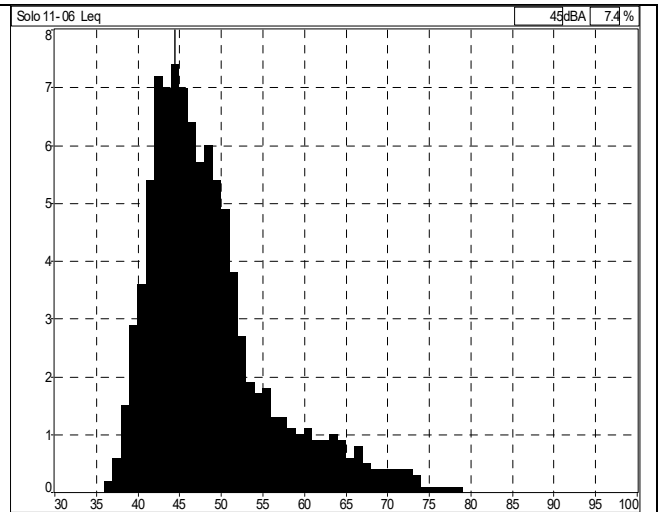
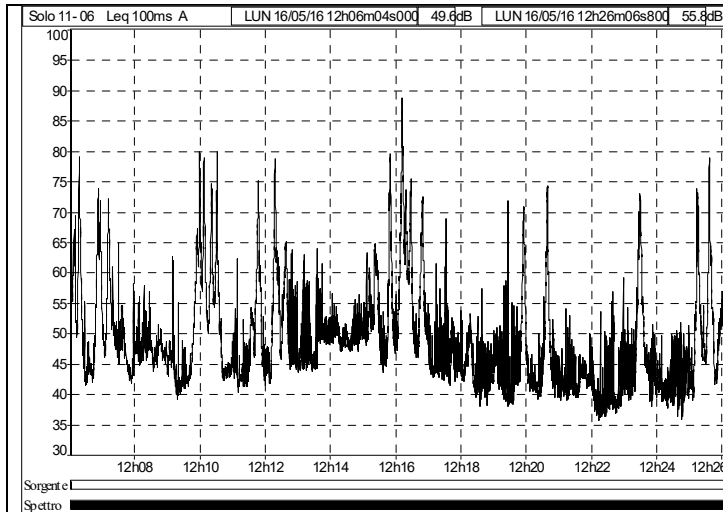


File	10- 060154_160516_113905000.CMG									
Inizio	16/05/16 11.39.05.000									
Fine	16/05/16 11.54.07.600									
Canale	Tipo	Wgt	Unit	Leq	Lmin	Lmax	L95	L90	L10	L5
Solo 10- 06	Leq	A	dB	48,5	33,3	67,7	36,8	38,2	51,5	53,8

17 °C – sereno - assenza di vento
 Traffico veicolare leggero e pesante

Uccelli
 Leggero antropico
 Due auto in parcheggio



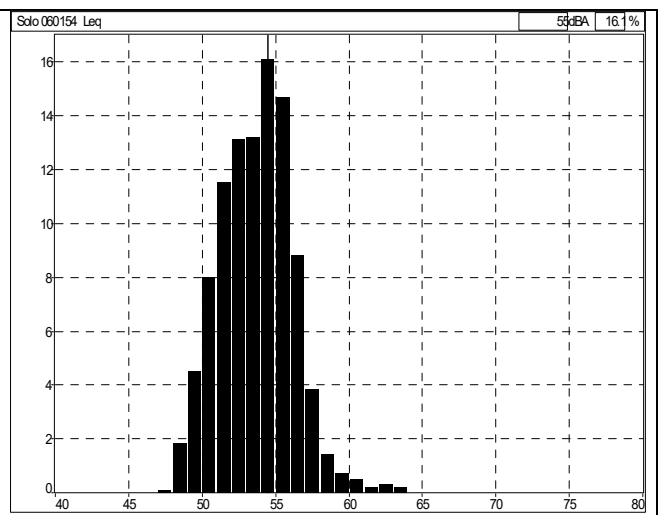
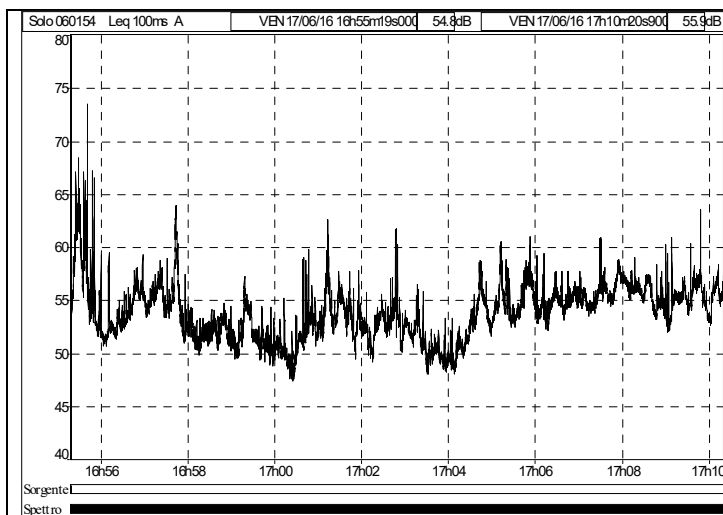


File	11- 060154_160516_120604000.CMG									
Inizio	16/05/16 12.06.04.000									
Fine	16/05/16 12.26.06.900									
Canale	Tipo	Wgt	Unit	Leq	Lmin	Lmax	L95	L90	L10	L5
Solo 11- 06	Leq	A	dB	62,3	35,6	92,8	39,8	41,1	60,7	66,1

16 °C – sereno - assenza di vento
 Traffico veicolare leggero e pesante

Uccelli
 Leggero antropico
 Due aeromobili





File	060154_160617_165519000.CMG									
Inizio	17/06/16 16.55.19.000									
Fine	17/06/16 17.10.21.000									
Canale	Tipo	Wgt	Unit	Leq	Lmin	Lmax	L95	L90	L10	L5
Solo 060154	Leq	A	dB	54,7	47,4	73,5	49,7	50,5	56,7	57,5

28 °C – assenza di vento

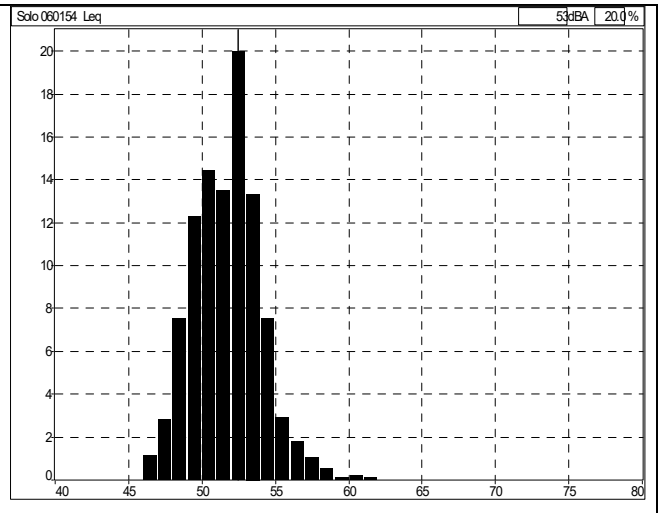
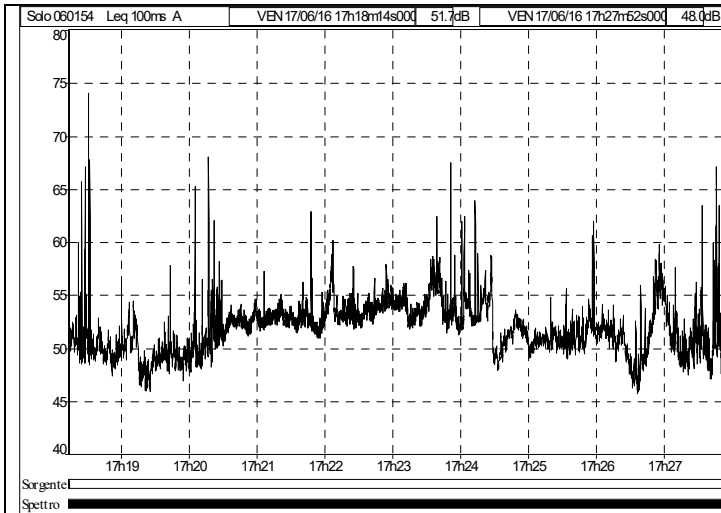
Autostrada con tratto di barriera acustica.

Traffico in autostrada e sul cavalcavia

Antropico ciclisti di passaggio

Uccelli



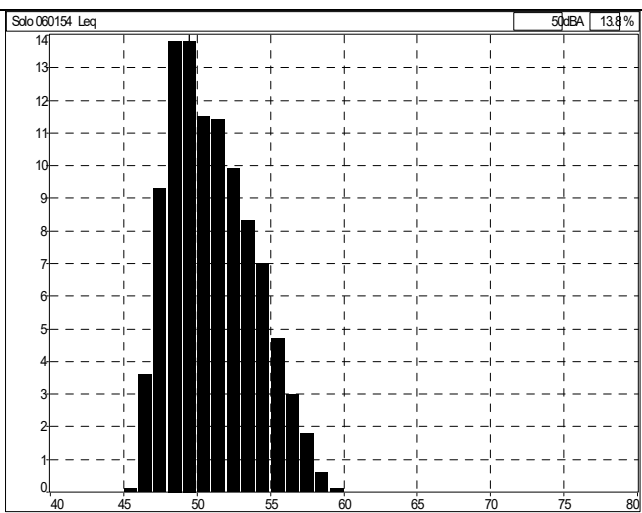
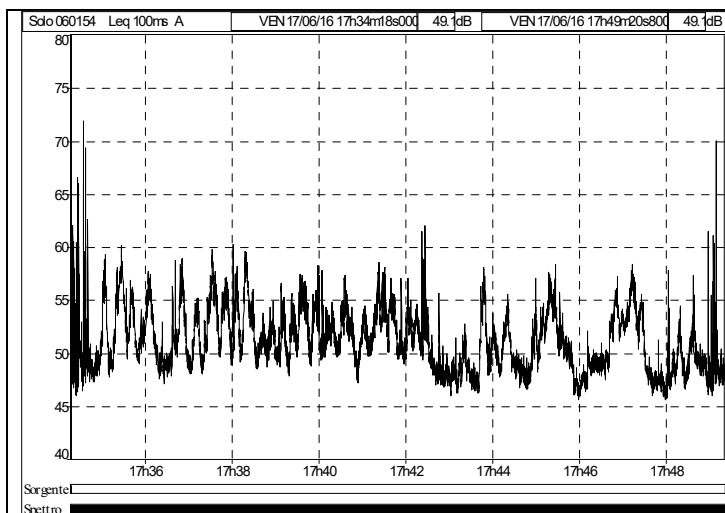


File	060154_160617_171814000.CMG									
Inizio	17/06/16 17.18.14.000									
Fine	17/06/16 17.27.52.100									
Canale	Tipo	Wgt	Unit	Leq	Lmin	Lmax	L95	L90	L10	L5
Solo 060154	Leq	A	dB	52,8	45,7	74,0	48,2	48,8	54,5	55,6

27 °C – assenza di vento

Traffico veicolare in Via Roma
Funerale in corso

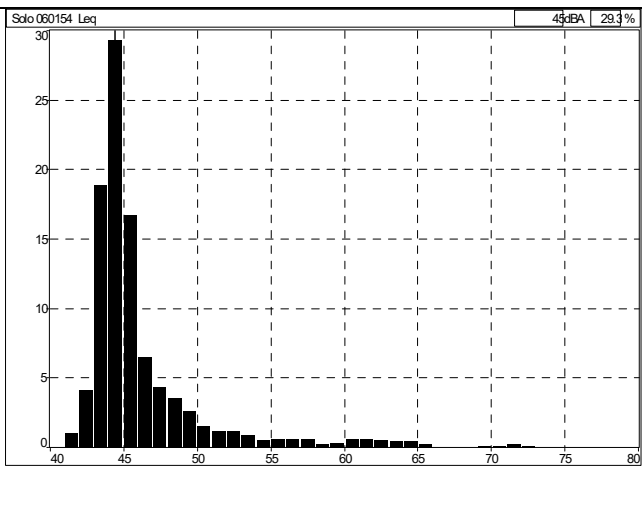
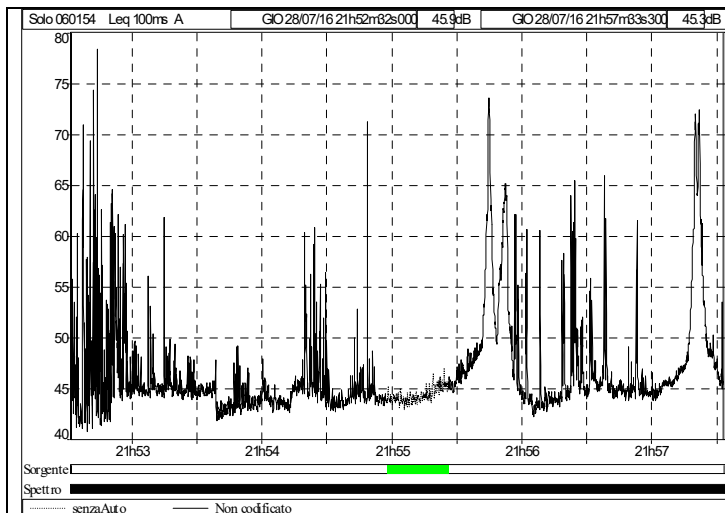




File	060154_160617_173418000.CMG									
Inizio	17/06/16 17.34.18.000									
Fine	17/06/16 17.49.20.900									
Canale	Tipo	Wgt	Unit	Leq	Lmin	Lmax	L95	L90	L10	L5
Solo 060154	Leq	A	dB	52,3	45,6	71,9	47,1	47,7	55,1	56,2

27 °C – assenza di vento

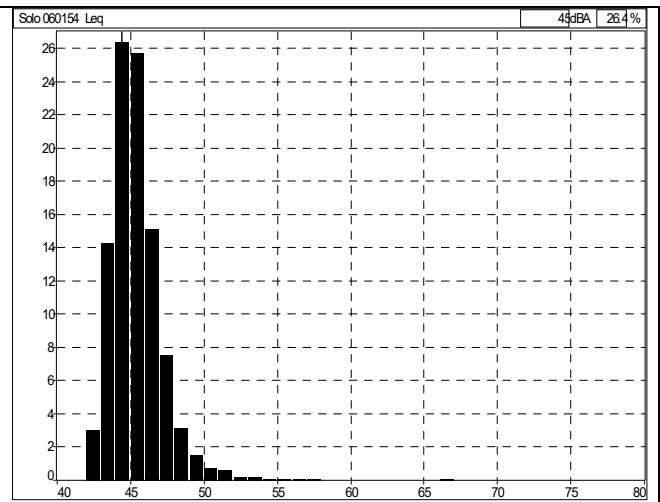
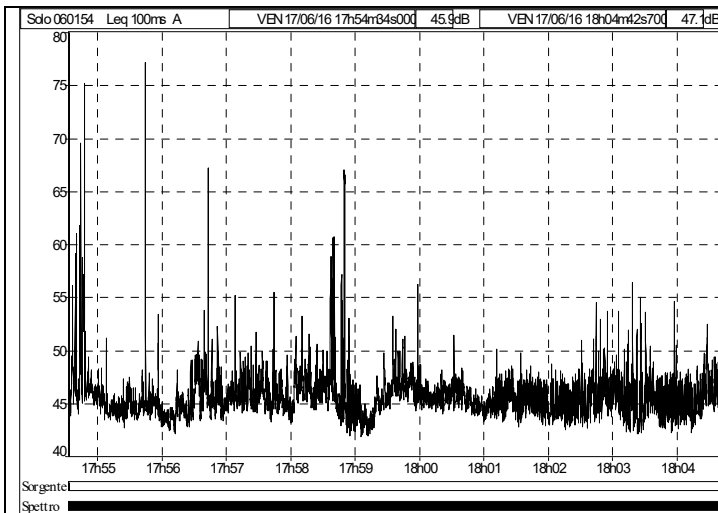
Traffico locale su via Vallio
Emissioni da industria a est (Texa)
Lavori agricoli nei campi vicini



File	060154_160728_215232000.CMG						
Ubicazione	Solo 060154						
Tipo dati	Leq						
Pesatura	A						
Inizio	28/07/16 21.52.32.000						
Fine	28/07/16 21.57.33.400						
	Leq	Lmin	Lmax	L95	L90	L10	L5
Sorgente	dB	dB	dB	dB	dB	dB	dB
senzaAuto	44,4	42,9	46,9	43,4	43,5	45,2	45,5
Non codificato	54,8	40,7	78,4	42,9	43,3	52,5	59,1
Globale	54,4	40,7	78,4	42,9	43,3	51,8	57,8

22 °C – assenza di vento

Il rilievo in assenza di auto è pressoché totalmente associabile all' impiantistica della vicina azienda.

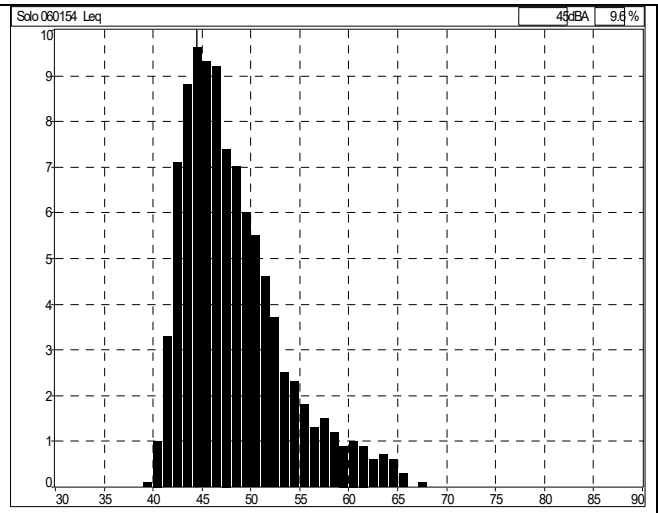
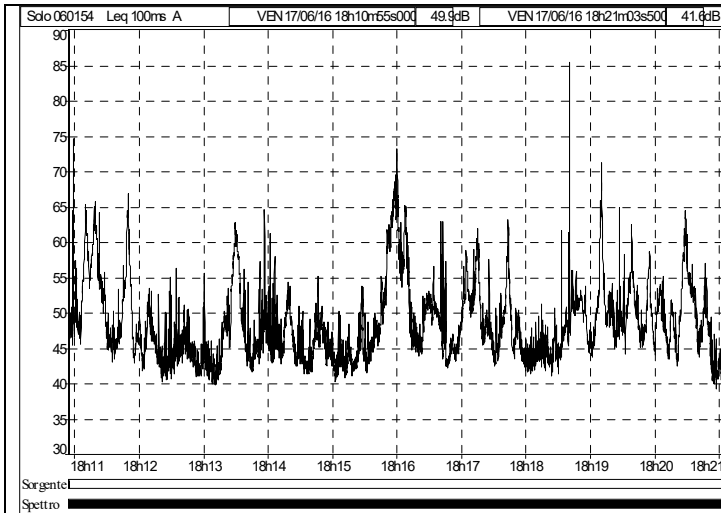


File	060154_160617_175434000.CMG									
Inizio	17/06/16 17.54.34.000									
Fine	17/06/16 18.04.42.800									
Canale	Tipo	Wgt	Unit	Leq	Lmin	Lmax	L95	L90	L10	L5
Solo 060154	Leq	A	dB	48,4	41,8	77,1	43,2	43,5	47,6	48,7

28 °C – assenza di vento

Traffico sostenuto su Via Zugno
Grilli, uccelli



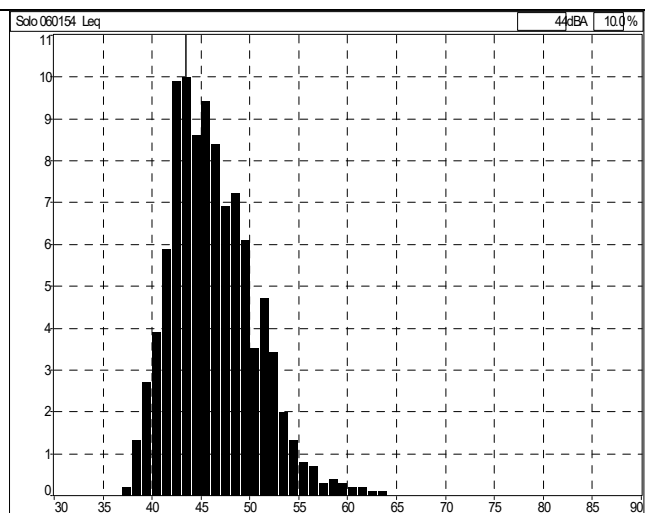
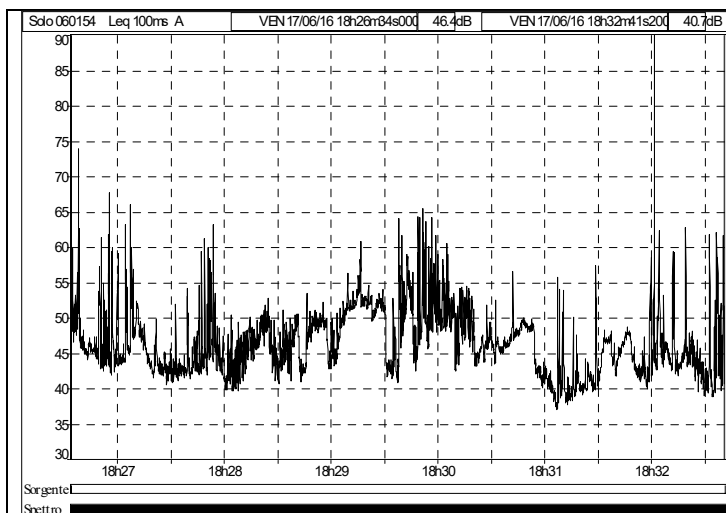


File	060154_160617_181055000.CMG									
Inizio	17/06/16 18.10.55.000									
Fine	17/06/16 18.21.03.600									
Canale	Tipo	Wgt	Unit	Leq	Lmin	Lmax	L95	L90	L10	L5
Solo 060154	Leq	A	dB	54,5	39,2	85,4	42,0	42,8	56,1	59,9

27 °C – assenza di vento

Traffico locale in Via Hemingway e in Via Einaudi
 Leggero antropico



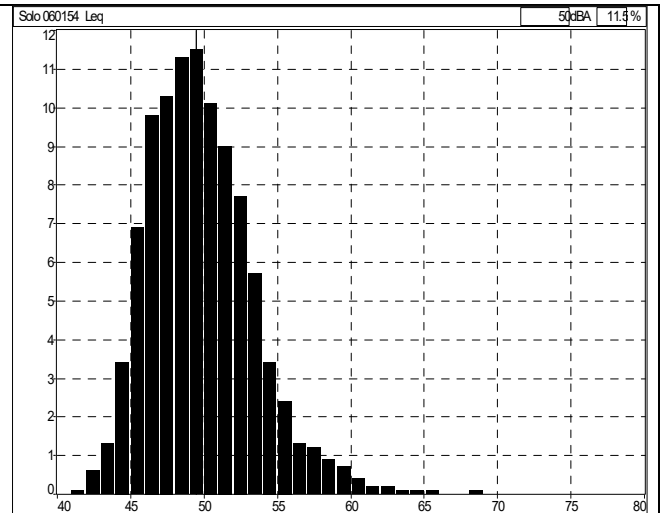
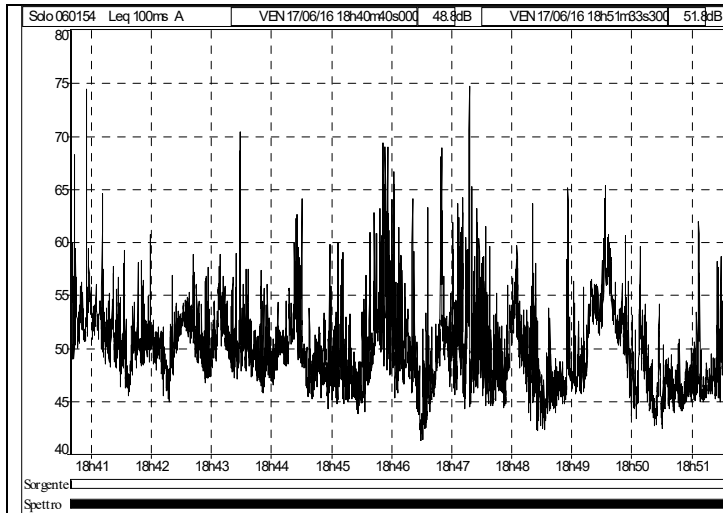


File	060154_160617_182634000.CMG									
Inizio	17/06/16 18.26.34.000									
Fine	17/06/16 18.32.41.300									
Canale	Tipo	Wgt	Unit	Leq	Lmin	Lmax	L95	L90	L10	L5
Solo 060154	Leq	A	dB	55,6	37,0	90,0	40,1	41,4	52,0	53,9

28 °C – assenza di vento

Antropico, cani, giochi nel parco
Taglio erba in lontananza



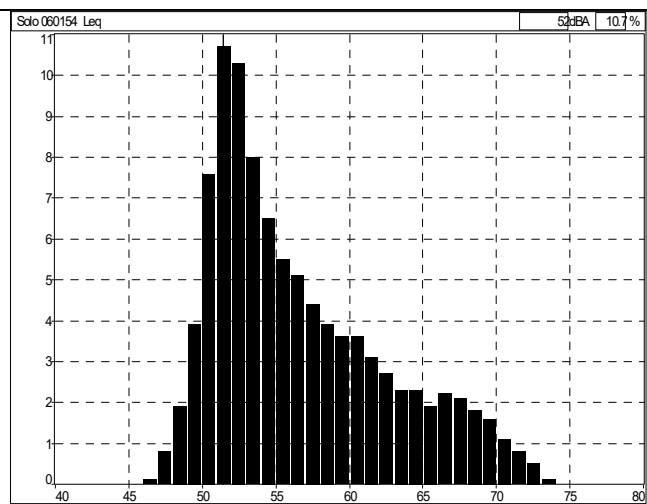
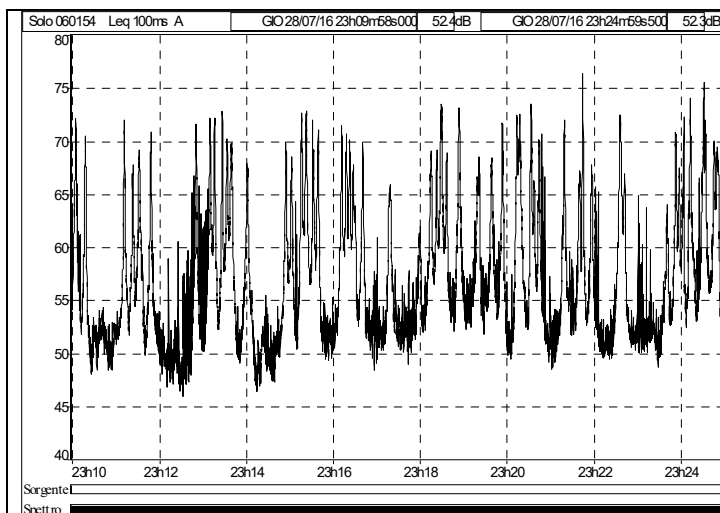


File	060154_160617_184040000.CMG									
Inizio	17/06/16 18.40.40.000									
Fine	17/06/16 18.51.33.400									
Canale	Tipo	Wgt	Unit	Leq	Lmin	Lmax	L95	L90	L10	L5
Solo 060154	Leq	A	dB	52,6	41,3	74,7	44,9	45,7	54,4	56,7

26 °C – assenza di vento

Traffico locale su Via Einaudi
 Antropico rilevante, giochi nel parco
 Taglio erba in lontananza





File	060154_160728_220958000.CMG									
Inizio	28/07/16 23.09.58.000									
Fine	28/07/16 23.24.59.600									
Canale	Tipo	Wgt	Unit	Leq	Lmin	Lmax	L95	L90	L10	L5
Solo 060154	Leq	A	dB	61,7	46,0	76,4	49,5	50,4	66,3	68,7

23 °C – assenza di vento

Serata musicale presso Hotel Villa Fiorita
 Traffico veicolare indotto sostenuto

